

Absorbed Glass Mat VRLA Industrial Battery Block

Discover® Clean & Green™ Series EV Traction Dry Cell Industrial Batteries provide superior high integrity and reliability for environmentally sensitive areas, commercial, industrial and private applications. The maintenance-free, valve regulated lead acid (VRLA) construction makes Discover® EV Traction Batteries the definitive choice for Mobility and Home Medical Equipment (HME); Broadband and Cable TV (CATV); Uninterruptible Power Supplies (UPS); Telecommunication; Photovoltaic, Solar and Renewable Energy Storage; Electronic and Security; Marine and RV; Golf and Electric Vehicle; Aerial Lifts and Fork Lifts; Floor Machines and Robotics.

Features & Benefits

EV Traction Dry Cell

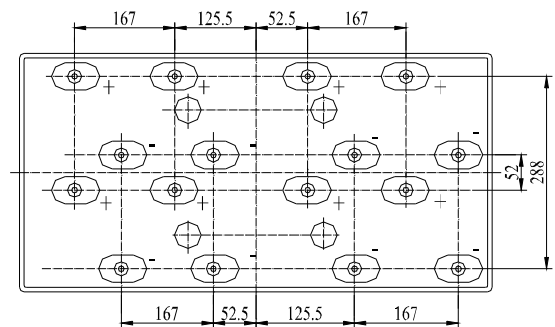
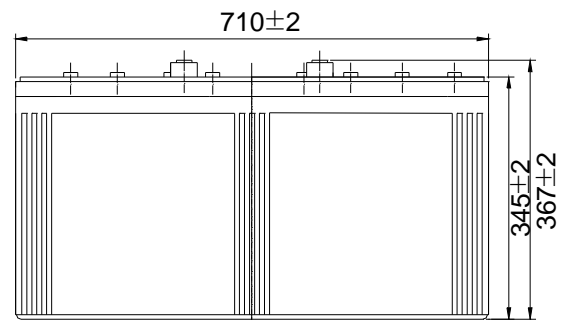
- Completely sealed valve regulated construction.
- Flame arresting pressure regulated safety sealing valves for safety, operating pressure management and protection against atmospheric contamination (excess oxygen being absorbed by negative plates).
- Computer-aided 99.994% pure heavy-duty lead calcium grid designs.
- Tank formed plates guarantees evenly formed and capacity matched plates.
- Discover® proprietary Vision Max® Paste Formula.
- Anchored plate groups to guard against vibration.
- Double insulating Micro porous glass fiber separators.
- Measured and Immobilized electrolyte.
- Vacuum filling and weighing processes.
- Advanced technology for efficient gas recombination of up to 99.9% and freedom from electrolyte maintenance.
- Wide range of operating temperatures (-40°C to 60°C).
- Low self discharge rates (Approx. 1%-3% monthly at 20 °C-25°C / 68°F-77°F).
- High impact reinforced strength copolymer ABS cases and flat top designed covers that are rugged and vibration resistant.
- Epoxy adhesion case to cover bonds that eliminate leakage.
- Copper and stainless steel alloy terminals and hardware.
- Multi-terminal options.
- Terminal protectors.
- Removable carry handles.
- Industry leading size and performance options.
- Classified as "NON-SPILLABLE BATTERY" Not restricted for Air (IATA/ICAO) Provision 67, Surface (DOT-CFR-HMR49) or Water (Classified as non-hazardous per IMDG amendment 27) transportation.
- Can be used in multiple orientations (upside down is not recommended).
- Compatible with sensitive electronic equipment.
- Quality Assurance processes with ISO (4400/992579), QS and TUV Certification EMC tested, CE, ETTS Germany (G4M19906-9202-E-16). UL recognized and approved components (MH29050).
- Tellcordia and Bellcore compliant.



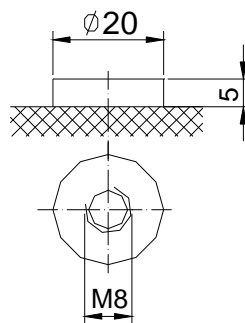
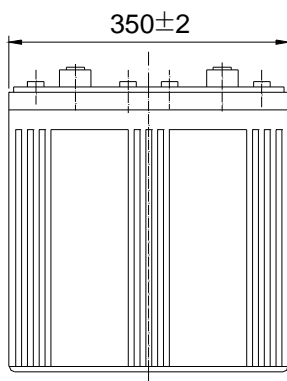
Complies with DOT provisions listed in 49CFR173.159 (d). Special provision A67

Mechanical Characteristics

Industry Type No.	Volts	Standard (optional) Terminals	Dimensions in Inches (mm)				Approx. Weight in Lbs (Kgs)
			L in(mm)	W in(mm)	H in(mm)	TH in(mm)	
DIN	2	F10	28.0 (710)	13.8 (350)	13.6 (345)	15.0 (382)	450 (204)



Total height with removeable cover: 382



Electrical Specifications

Ampere Hour Capacity							
120HR	100HR	36HR	20HR	10HR	5HR	3HR	1HR
3750	3630	3360	3300	3000	2700	2250	1860
Minutes of Discharge					RC@25A	Cranking Amps	
@25A	@56A	@75A	@85A	@100A		32°F/ 0°C	0°F/ -18°C
10922	3997	2905	2418	2336	9940		

Constant current discharge ratings-amperes at 20°C (68°F)

End Point Volts/Cell	10min	15min	30min	45min	1h	3h	5h	10h
1.60V	5165	4033	2989	2173	1860	836	582	321
1.65V	4896	3839	2857	2086	1803	809	570	318
1.70V	4617	3639	2720	1994	1747	785	560	313
1.75V	4331	3436	2579	1898	1688	750	540	307
1.80V	4041	3230	2434	1800	1642	717	530	300

Constant power discharge ratings-watts per cell at 20°C (68°F)

End Point Volts/Cell	10min	15min	30min	45min	1h	3h	5h	10h
1.60V	7748	6050	4484	3477	2976	2040	1423	922
1.65V	7344	5759	4286	3338	2895	2017	1386	906
1.70V	6926	5459	4088	3199	2814	1942	1346	888
1.75V	6497	5154	3890	3060	2733	1859	1302	869
1.80V	6062	4845	3692	2921	2652	1770	1268	826

Internal resistance	Fully charged at 20°C: 0.08 mOhms		
Self discharge	<3% of capacity per month at 20°C		
Operating temperature range	Discharge	Charge	Storage
	-20~60°C	-10~50°C	-20~60°C
Short circuit current (20°C)	26200A		

CHARGE METHODS: Constant voltage charge at 20°C (68°F)	Charge voltage	Temperature compensation	Maximum Current	Peak 5 seconds	Peak 10 seconds	Maximum continuous	Recommended maximum continuous
Standby use	2.27-2.30V	-3.3mV/°C	Maximum charge current	1C10A	0.75C10A	0.5C10A	0.3C10A
Cyclic use	2.40-2.45V	-5mV/°C	Maximum discharge current	2C10A	1.5C10A	1C10A	0.5C10A

Contact Discover Engineering for OEM specific charging algorithms!

Charge / Discharge Tables & Graphs

